

## Special offer

### Manual Coordinate Measuring Machine SMART

**Granite guide ways** of highest quality secures high thermal stability, precision and mechanical rigidity.

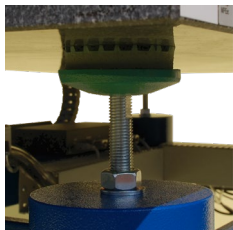
**Optimized air bearings** are used to realize highest precision and lowest air consumption.

The **single lock for each axis** enables the operator to lock an axis and to perform precise measurements within a plane.

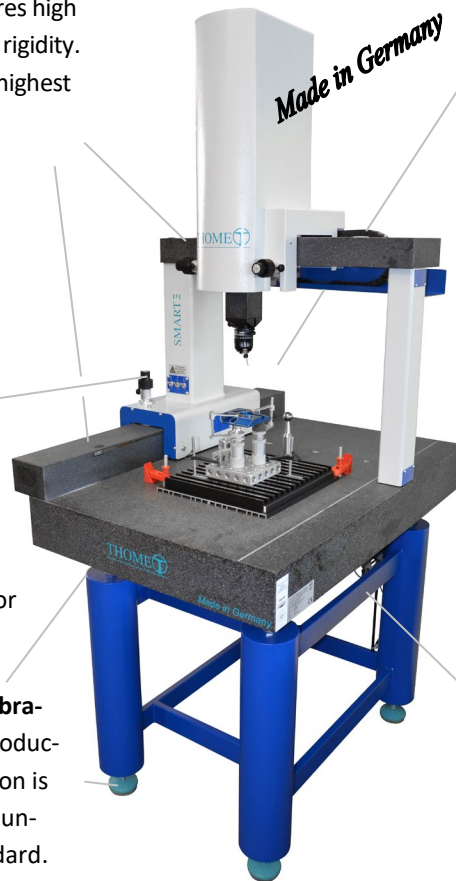


A **two-stage fine drive** in all axes

This allows fast and very precise motions, for the measurement of tight contours.



A **double-passive vibration damping** for production applied operation is integrated into the underframe as a standard.



**Probes by RENISHAW**

**a) TP8**

Manual rotatable probe head for simple measurement tasks. Must be recalibrated after turning and rotating.



**b.) MH20i**

manual, indexable and rotatable probe head, 168 repeatable positions in 15° increments, TP20 probe integrated, all positions can be reproduced without recalibration. Fast change of the tip by hand because of magnetic holder.



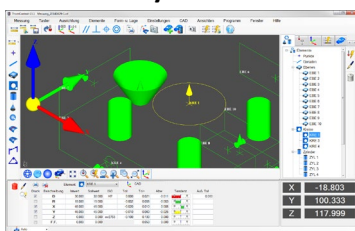
**Taststift M2, Ø3, L=30, Stahl**



**Pressure gauges** in each axis for easy maintenance reason.

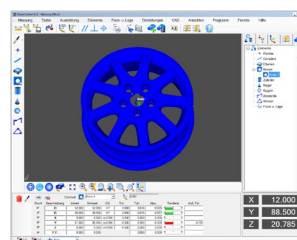


**User-friendly measurement software**



**a.) Basic geometry**

All geometric elements can be measured, graphically displayed and recorded. Evaluation of all shape and position tolerances. ISO tolerance database is integrated. Measuring programs via Teach-In.



**b.) Basic geometry with CAD**

CAD files in IGS and STEP format can be imported. Elements can be selected by clicking on the CAD model to create the nominal data.

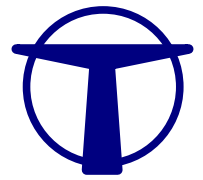
**Your delivery:**

1. CMM SMART Manual **"Made in Germany"** - Uncertainty acc. ISO 10360-2 MPE<sub>E</sub>=3+L/250, MPE<sub>P</sub>=3,5µm
2. USB Counting Box
3. DELL PC-to-date performance, including 3-year on-site service, WINDOWS 7, 22"-LED Monitor, "ALL IN ONE" colour printer.
4. Stylus Ø3 L=30 steel and calibration ball Ø25.

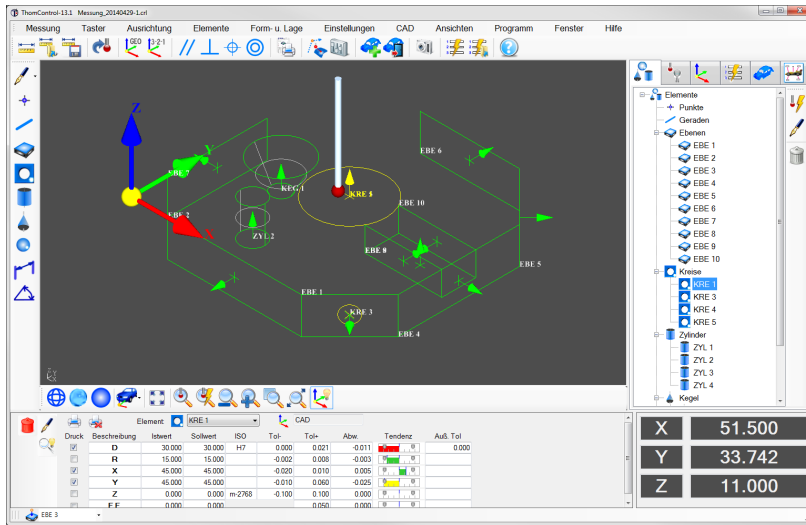
**You will also receive the following equipment according to your requirements:**

	<b>Best seller!</b>			
	<b>SMART package 1</b>	<b>SMART package 2</b>	<b>SMART package 3</b>	<b>SMART package 4</b>
<b>Probe</b>	TP8	TP8	MH20i	MH20i
<b>Inspection software ThomControl</b>	Basic geometry	Basic geometry CAD	Basic geometry	Basic geometry CAD
<b>Measuring range 600x400x280mm</b>	<b>15.990 €</b>	<b>17.490 €</b>	<b>17.990 €</b>	<b>19.490 €</b>
Order No.:	P643-PS-TP8-UK	P643-BP-TP8-UK	P643-PS-MH20i-UK	P643-BP-MH20i-UK
<b>Measuring range 800x400x280mm</b>	<b>17.990 €</b>	<b>19.490 €</b>	<b>19.990 €</b>	<b>21.490 €</b>
Order No.:	P843-PS-TP8-UK	P843-BP-TP8-UK	P843-PS-MH20i-UK	P843-BP-MH20i-UK

All prices are Ex. Work. Transport, packing, training, installation and travel expenses are not included. Warranty period: 12 months. This offer is without obligation. Price changes are reserved.



## ThomControl Basic geometry manual



Simple, intuitive operation with graphical support through a clear user interface.

Easily create alignments with the 3-2-1-alignment or the Geometric alignment respectively with graphic preview.

The nominal values of the elements can be entered in clear windows and then be automatically measured via a displayed CNC measuring strategy. A tolerance database with the ISO tolerances according to DIN ISO 286 is available. The measurement results are displayed directly in the result window with graphical trend bars.

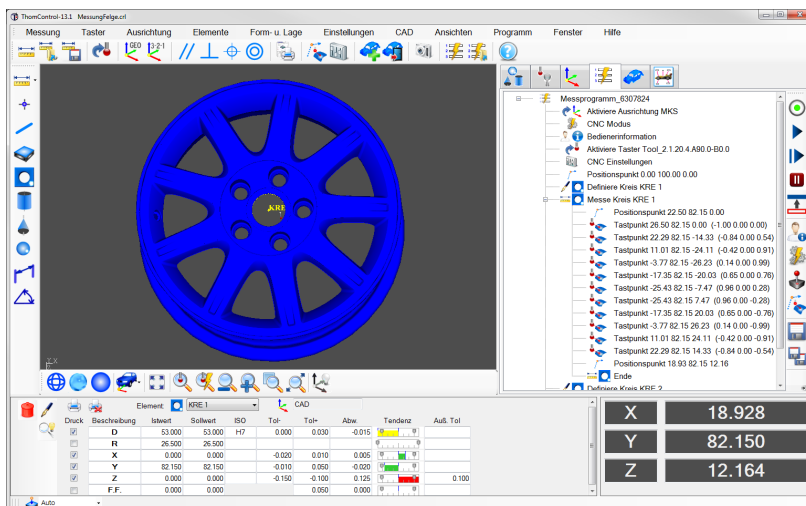
Comprehensive form and position evaluations such as parallelism, perpendicularity, concentricity, position, flatness, straightness, etc. are available.

Measuring programs can be easily created and very easily changed by double clicking on the program line. Manual measurement programs can be generated.

All measurement results are stored and are available again at any time. In addition to the internal file format of THOMControl the measurement reports can also be saved in Word, Excel and PDF. The measurement reports are easy to adapt to your layout requirements. Several standard report templates are included.

Various constructions of geometric elements allow extensive calculations of theoretical dimensions. All items are displayed graphically in 3D and can be printed graphically, for better interpretation of the measurement results.

## ThomControl Basic geometry with CAD manual



CAD files in IGS and STEP format can be imported. Elements can be selected via the CAD file with a mouse click and nominal values are created.

Graphical views can be created and recalled at any time. This makes it easier to run measuring programs by displaying the best graphical view.

For a clear evaluation the graphical views can also be inserted into the inspection report and printed out.

During running of a program ThomControl will automatically highlighting the element which has to be measured. This helps the operator to avoid mistakes and makes it easy to identify the element to be measured.